

Open Source Software Integration

Minimize Code Minimize Cost

Strategies

- Libraries
- Component
- Framework
- Application Integration

Application Integration

- Web based
- SOAP or Rest interface
- Output format
 - HTML
 - XML
 - JSON
 - Excel or CSV
 - PDF

Open Source Acceptance

“NYSE were adopting Linux”

Network World 2007

“72 % of Servers were Linux in
16 biggest Wall Streets Firms”

Tabb Group 2007

Disruptive Technologies

Open Source Technologies

MySQL Effect

Commercial Open Source (COS)

Founded by veterans of the
sectors

Pentaho, founders come from
Business Objects, Cognos,
Hyperion, IBM, Oracle, SAS

Wikipedia

Alfresco, founded by co-founder of
Documentum and former COO of
Business Objects

Wikipedia

Open Source M&A

SUN	Mysql	\$1b
Citrix	XenSource	\$500m
Yahoo	Zimbra	\$350m

“3 out of 5 hot top IPO are Open
Source companies, MySQL, Ingres
and Sugar CRM”

Fortune January 2008

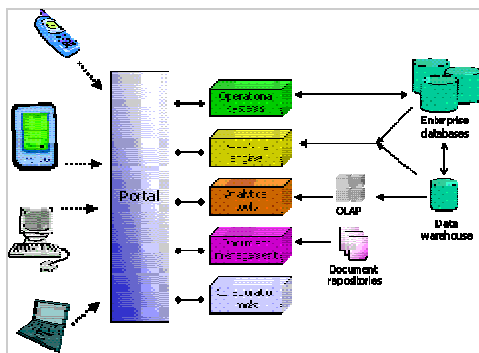
"It took around 12.49 months to double the total open source lines of code"

Techsolv

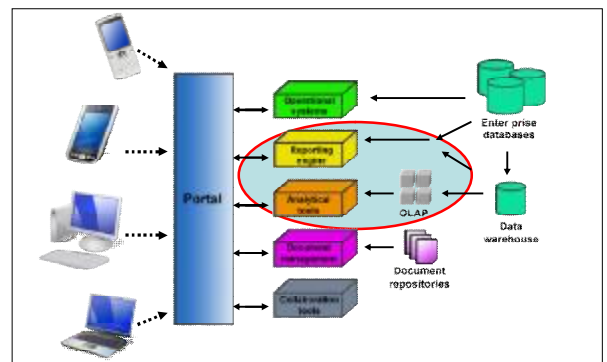
"Open source is much more potentially disruptive [than Google]"

Ray Ozzie, May 2008

Enterprise Information Architecture



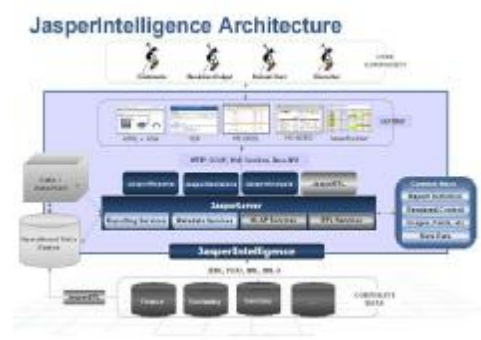
Business Intelligence



JasperSoft

JasperServer		Interactive, ad hoc, and managed reporting and dashboards
JasperAnalysis		Interactive data analysis / OLAP
JasperETL		High-performance data integration
JasperReports		Pixel-perfect reports for screen or print

Architecture



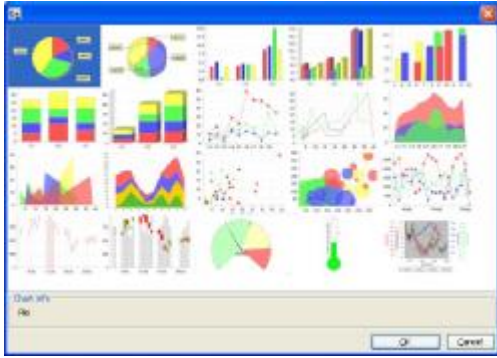
iReport



Report Preview



Charts



Crosstabs



Jasper Server



Dashboard



Output Preview

Name	Phone	Address
1. Oracle Financial Services Corp.	209-251-5742	1850 California Street
2. Oracle Financial Services Corp.	876-252-8124	6110 Westwood Dr.
3. Oracle Financial Services Corp.	219-251-9117	4010 Woodland Dr.
4. Oracle Financial Services Corp.	952-288-8148	381 Westwood
5. Oracle Financial Services Corp.	410-288-8111	3811 Woodland Avenue
6. Oracle Financial Services Corp.	870-251-8841	1000 Woodland Dr.
7. Oracle Financial Services Corp.	711-288-8112	6715 Woodland Dr.

Tomcat-based Report Server

Highly scalable

Integrate with iReport (Report Designer)

Output to multiple formats e.g. PDF, HTML, Excel, RTF

Lots of interface e.g. Web Services, Java, PHP, C and HTTP

Secure report repository

Report Scheduling and Distribution

- Scheduled run begin and end dates.
- Calendar-based recurrence: every day / weekday / day of month.
- Output to PDF, HTML, Excel, RTF.
- Email notifications with report links or optional reports attachments.

Historical report versioning for audit and regulatory compliance

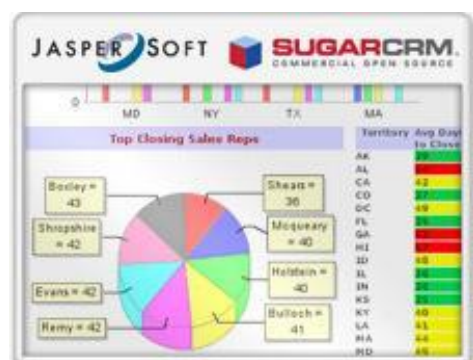
Instant Portal Access

- JSR 168 compliant.
- Liferay Integration.

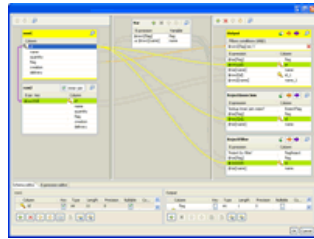
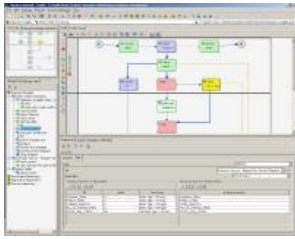
Salesforce Integration



SugarCRM Integration



JasperETL an Easy to use GUI ETL



Demonstration

<http://bitnami.org/>



Reference



The Definitive Guide to iReport (Expert's Voice)

By: Giulio Toffoli
Publisher: Apress; 1
edition (August 27,
2007)